

2019 J/30 North American Championship September 19-22, 2019



CBYRA Sanction #354, 355, 356
Organizing Authority: Annapolis Yacht Club,
Annapolis, Maryland, USA
<http://www.annapolisyc.com/racing/regattas>

SAILING INSTRUCTIONS including Amend. No. 1 & No.2

The notation '[DP]' in a rule in the sailing instructions (SIs) or notice of race (NoR) means that the penalty for a breach of that rule may, at the discretion of the protest committee, be less than disqualification. The notation '[NP]' in a rule of the SIs or NoR means that a boat may not protest another boat for breaking that rule. This changes RRS 60.1(a).

1 RULES

- 1.1 The regatta will be governed by the rules as defined in The Racing Rules of Sailing (RRS).
- 1.2 The J/30 One Design Class Rules will apply.

2 COMMUNICATIONS WITH COMPETITORS

- 2.1 Notices to competitors will be posted on the official notice board which is electronic and located at:
<https://yachtscoring.com/emenu.cfm?eID=6236>.
- 2.2 The race office is located at the western end of the 3rd floor of the AYC Sailing Center, and can be reached by telephone at 410-858-4964 or by email at raceoffice@annapolisyc.org. Forms can be found at the race office or online at <https://annapolisyc.com/racing/raceoffice>.
- 2.3 On the water, the race committee intends to monitor and communicate with competitors via VHF radio on channel 72.
- 2.4 [DP] All boats shall carry a VHF radio capable of communicating on channels 9.1`3.16.68.69.70, 71, and 72.

3 CHANGES TO SAILING INSTRUCTIONS

- 3.1 Any change to the SIs will be posted no later than 2 hours before the first scheduled warning signal on the day it will take effect, except that any change to the schedule of races will be posted by 2000 on the day before it will take effect.

4 SIGNALS MADE ASHORE

- 4.1 Signals made ashore will be displayed from the flagpole on the 2nd deck of the AYC Clubhouse.
- 4.2 When flag AP is displayed ashore, '1 minute' is replaced with 'not less than 60 minutes' in the race signal AP.

5 SCHEDULE OF RACES

- 5.1 The racing days will be Friday, September 20 through Sunday, September 22.

- 5.2 The warning signal for the first race of the regatta is scheduled for 1030 on Friday, September 20. The warning signal is scheduled for 1200 on Saturday September 21. The warning signal is scheduled for 1030 on Sunday September 22.

- 5.3 Seven races are scheduled. Up to 4 races may be sailed in one day.
- 5.4 No warning signal will be made after 1400 on the last scheduled day of racing.

6 CLASS FLAGS

- 6.1 The class flag will be Flag D.

7 RACING AREA

- 7.1 The racing area will be in the Chesapeake Bay off the mouth of the Severn River as shown in SI Attachment 1.
- 7.2 No later than 120 minutes prior to the first scheduled warning signal, the race committee will post the approximate intended location of the starting area on the notice board.
- 7.3 Approximately 60 minutes prior to the first scheduled warning signal, the race committee will announce the approximate location of the starting area on VHF radio.
- 7.4 Approximately 30 minutes prior to the first scheduled warning signal, the race committee will announce location of the race committee signal vessel.

8 THE COURSES

- 8.1 The courses are shown in SI Attachment 2.
- 8.2 No later than the warning signal, the race committee signal vessel will display the course to be sailed, the approximate distance between the leeward and windward marks, and the approximate compass bearing of the first leg of the course.

9 MARKS

- 9.1 Starting marks, finishing marks, and mark 1a will be lime green cylinders. All other marks of the course will be orange cylinders. New marks used in

accordance with SI 12 will be orange cylinders with a dark colored band.

- 9.2 A race committee starting or finishing vessel may set a stand-off buoy. When present, this stand-off buoy, the line attaching it to the race committee vessel, and the race committee vessel are all part of the starting or finishing mark.

10 THE START

- 10.1 The starting line will be between the staff or halyard with an orange flag displayed on the race committee signal vessel and either the course side of the starting mark or the staff with an orange flag displayed on the race committee vessel at the port end.
- 10.2 A boat that does not start within 10 minutes after her starting signal will be scored Did Not Start without a hearing. This changes RRS A4 and A5.

11 RECALLS

- 11.1 The race committee will announce on VHF radio boats identified as OCS, UFD, or BFD. A boat may not base a request for redress on the failure to hear or receive the announcements, the timeliness of announcement or the order in which boats are announced. This changes RRS 62.1(a).

12 CHANGE OF THE NEXT LEG OF THE COURSE

- 12.1 To change the next leg of the course, the race committee will lay a new mark (or move the finishing line) and remove the original mark as soon as practicable. When in a subsequent change, a new mark is replaced, it will be replaced by an original mark.

13 THE FINISH

- 13.1 The finishing line will be between a staff or halyard displaying an orange flag on the race committee finishing vessel and the course side of the finishing mark.

14 PENALTY SYSTEM

- 14.1 Penalties while racing: RRS 44.1, One-Turn and Two-Turns Penalties will apply.
- 14.2 RRS/US Appendix T, Arbitration will apply.

15 TIME LIMITS

- 15.1 If no boat has passed the first mark within 45 minutes after the starting signal, the race will be abandoned.
- 15.2 The time limit is 120 minutes.
- 15.3 Boats failing to finish within 20 minutes after the first boat in her class sails the course and finishes, and not subsequently retiring, penalized or given redress, will be scored Time Limit Expired (TLE) without a hearing. This changes RRS 35, A4, A5 and A11.

16 PROTESTS, REQUESTS FOR REDRESS, SCORING INQUIRIES

- 16.1 Protest forms, scoring inquiry forms, and penalty acceptance forms shall be delivered to the race office (see SI 2).
- 16.2 Protests, requests for redress or reopening shall to the race office by the protest time limit.
- 16.3 When the race committee receives a scoring inquiry form, it will review its records and respond as soon as practicable.
- 16.4 The protest time limit is 60 minutes after the race committee signal vessel docks. The race committee will post the protest time limit.
- 16.5 The race committee will post a list of race committee scoring actions no later than the protest time limit.
- 16.6 Notices of protests by the race committee or protest committee will be posted to inform boats under RRS 61.1(b).
- 16.7 As soon as practicable after the protest time limit, the protest committee will post a notice to inform competitors of the schedule and location of hearings in which they are parties or named as witnesses.

17 SCORING

- 17.1 RRS Appendix A4, Low Point System, will apply modified such that a boat's series score will be the total of her race scores.
- 17.2 One race is required to be completed to constitute a series.
- 17.3 Boats to be scored TLE will be scored points equal to the number of boats finishing within the finishing window plus two points by the race committee without a hearing but no worse than the number of entries. This changes RRS A4.2 and A5.

18 SAFETY REGULATIONS

- 18.1 [DP] A boat that retires from a race, or leaves the racing area between races, shall notify the race office (see SI 2) at the first reasonable opportunity.
- 18.2 [NP] [DP] A boat shall not exercise right of way, cross in proximity to, or interfere with reasonable transit of the race area by commercial ships, tugs, or barges. Boats must take evasive action well in advance of a potentially dangerous situation. The US Coast Guard, ship captains, and bay pilots have been encouraged to report any incident they observe.
- 18.3 A boat without way may use any means of propulsion to avoid commercial traffic that is under way provided: (a) the boat does not gain an advantage; (b) use of the propulsion is the boat's only means of avoiding the commercial traffic; and (c) the boat submits a report to the race office (in

writing or by e-mail to raceoffice@annapolisyc.org) by the protest filing deadline describing the incident and the boat's actions.

- 18.4 The race committee or protest committee may protest a boat for SI 18.2 based on information received from any source. A written statement from the US Coast Guard, a ship captain, or a bay pilot will be accepted as evidence without the author present. The protest time limit does not apply. This changes RRS 60.2, 60.3, 61.3, and 63.6.

19 REPLACEMENT OR CREW OR EQUIPMENT

- 19.1 Substitution of competitors will not be allowed without prior written approval of the race committee [DP].
- 19.2 Substitution of damaged or lost equipment will not be allowed unless authorized by the race committee. Requests for substitution shall be made to the race committee at the first reasonable opportunity [DP].

20 HAUL-OUT RESTRICTIONS

- 20.1 [DP] Boats shall be afloat by the end of on-site registration shall not be hauled out during the regatta except with and according to the terms of prior written permission of the Race Committee.

21 [DP] DIVING EQUIPMENT AND PLASTIC POOLS

- 21.1 Underwater breathing apparatus and plastic pools or their equivalent shall not be used around boats between the preparatory signal of the first race and the end of the regatta.
- 21.2 Boats shall not have any underwater portions of their boat cleaned from the preparatory signal of the first race through the end of the regatta.

22 MEASUREMENT AND INSPECTION

- 22.1 Boats, sails, and equipment shall be available for measurement and inspection on Thursday, September 19 during on-site registration and inspection hours. Appointments for measurement may be made in advance once the entry fee is paid. Details will be provided on the event website.
- 22.2 In J/30 Class Rule (J30CR) 5.14.1, Sailing Weight, the requirement for draft marks is waived. During measurement, the technical committee may determine sailing weight by measuring the distance for draft marks in accordance with J30CR 5.14.
- 22.3 All crew will be weighed for compliance with J30CR 6.7.
- 22.4 By the end of on-site registration, boats shall provide:
- Equipment Inspection Declaration (NoR 7.1)
 - Sail Declaration (NoR 7.1)
 - Crew Weight Declaration and Waivers (NoR 7.3 and 7.4)
 - Current proof of insurance (see NoR 18)

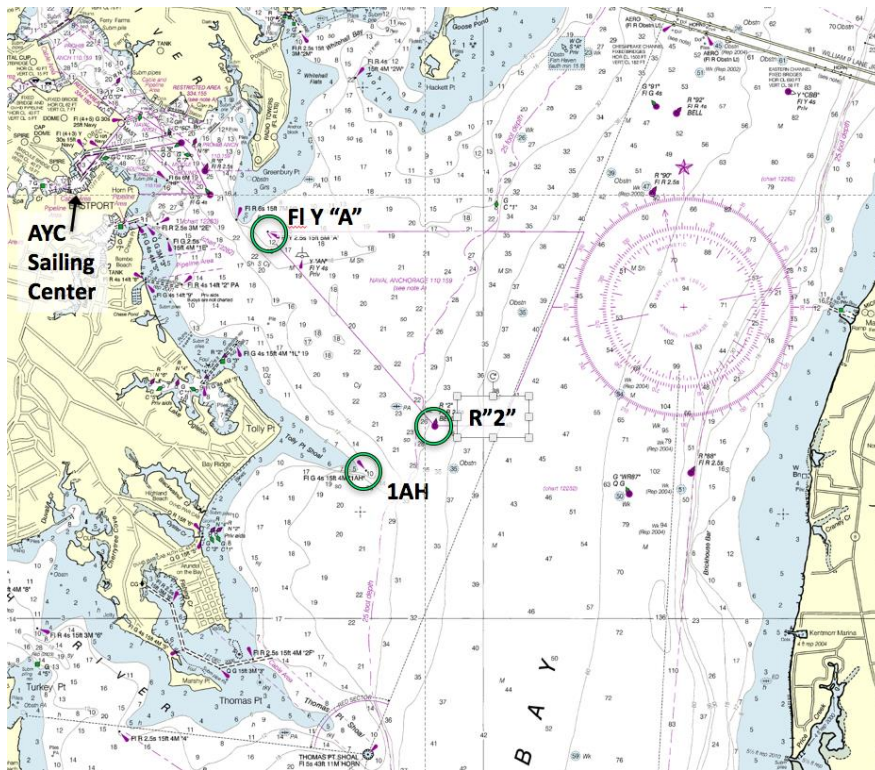
23 PRIZES

- 23.1 Prizes will be given to the top 3 boats.
- 23.2 Daily prizes will be given to the top 3 boats each day based on series scores for all races sailed that day.
- 23.3 Additional prizes may be awarded at the discretion of the organizing authority.

24 DISCLAIMER OF LIABILITY

- 24.1 Competitors participate in the regatta entirely at their own risk. See RRS 4, Decision to Race. The organizing authority will not accept any liability for material damage or personal injury or death sustained in conjunction with or prior to, during, or after the regatta.

SI ATTACHMENT 1 - RACE AREA



SI ATTACHMENT 2 - COURSES

In the below table, the course designation is followed by the mark rounding order for that course. All marks except 2S are to be rounded to port. If the race committee displays "NO GATE" near the course designation, then mark 2S will not be set. The marks are described in SI 9. The starting line is described in SI 10. The finishing line is described in SI 13.

<p style="font-size: 2em; font-weight: bold; margin-bottom: 10px;">LA</p> <p style="margin-top: 10px;">LA2: Start-1-1a-2s/2p-1-1a-Finish LA3: Start-1-1a-2s/2p-1-1a-2s/2p-1-1a-Finish</p>	<p style="font-size: 2em; font-weight: bold; margin-bottom: 10px;">L</p> <p style="margin-top: 10px;">L2: Start-1-2s/2p-1-Finish L3: Start-1-2s/2p-1-2s/2p-1-Finish</p>	<p style="font-size: 2em; font-weight: bold; margin-bottom: 10px;">TL</p> <p style="margin-top: 10px;">TL2: Start-1-2-3-1-Finish TL3: Start-1-2-3-1-3-1-Finish</p>
<p style="font-size: 2em; font-weight: bold; margin-bottom: 10px;">WA</p> <p style="margin-top: 10px;">WA2: Start-1-1a-2s/2p-Finish WA3: Start-1-1a-2s/2p-1-1a-2s/2p-Finish WA4: Start-1-1a-2s/2p-1-1a-2s/2p-1-1a-2s/2p-Finish</p>	<p style="font-size: 2em; font-weight: bold; margin-bottom: 10px;">W</p> <p style="margin-top: 10px;">W2: Start-1-2s/2p-Finish W3: Start-1-2s/2p-1-2s/2p-Finish W4: Start-1-2s/2p-1-2s/2p-1-2s/2p-Finish</p>	<p style="font-size: 2em; font-weight: bold; margin-bottom: 10px;">TW</p> <p style="margin-top: 10px;">TW2: Start-1-2-3-Finish TW3: Start-1-2-3-1-3-Finish</p>